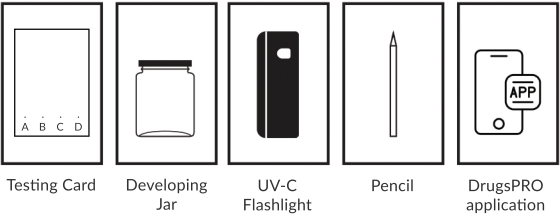
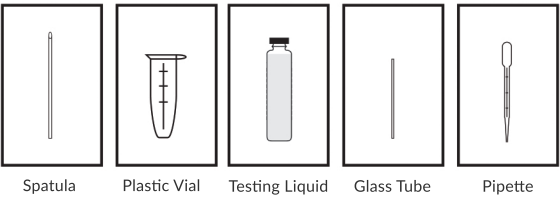


CHEMICALSAFETY

CANNABINOID PRO TEST

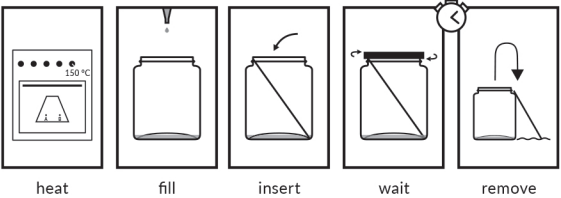
Estimate cannabis potency and identify cannabinoids

WOLINE  
KONUPE



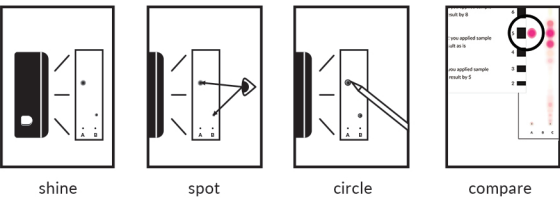
CONTENTS OF CANNABINOID PRO TEST

1. Spatula
2. Plastic Vials
3. Testing Liquid
4. Glass Tubes
5. Pipette
6. Testing Cards
7. Developing Jar
8. UV-C Flashlight
9. Pencil
10. DrugsPRO application



STEP 3  
DEVELOPING TESTING CARD

1. Put prepared Testing Card for 5 minutes in an oven at 150C to decarboxylate
2. Fill Developing Jar with 2 ml of fresh Testing Liquid
3. Evenly insert Testing Card with white side facing up and dots at the bottom
4. Close Developing Jar. Wait 25 min. or until Testing Card is almost fully soaked
5. Remove Testing Card, close Developing Jar, air-dry for 3 minutes

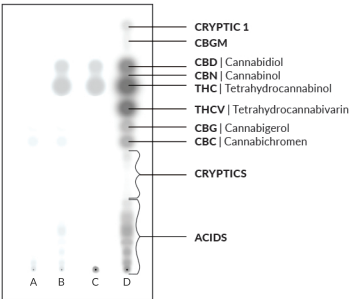


STEP 4  
REVEALING WITH LIGHT

1. Use UV-C flashlight to find spots on Testing Card
2. Use pencil to circle 1 mm around spot's length
3. Put Percentage Ruler over detected spot
4. Compare results with Percentage Ruler

WARNING: DO NOT SHINE UV-C LIGHT ON SKIN OR EYES

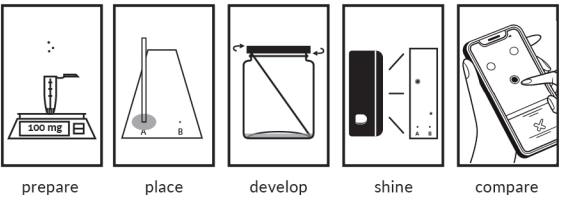
Pay attention to circle around whole spot length, not just their darkest part. If a spot is comet-shaped measure it's diameter from top to bottom. Spot shape can vary.



Example: sample B contains mostly THC, CBD and traces of CBC

TIPS & TRICKS

- You can also reveal THC and CBD by heating used Testing Card in 150C for 10 minutes
- You can reuse Testing Cards as long as they have an empty and not dyed „lane“
- Big dark patch on top part of Testing Card indicates hands/jar contamination



BASIC STEPS  
GENERAL INSTRUCTIONS

1. PREPARE YOUR SAMPLE: MEASURE AND DISSOLVE
2. PLACE YOUR SAMPLE ON TESTING CARD
3. HEAT TESTING CARD AND PLACE IN DEVELOPING JAR
4. REVEAL RESULTS AND CIRCLE AROUND DETECTED SPOTS
5. COMPARE RESULTS WITH INSTRUCTIONS

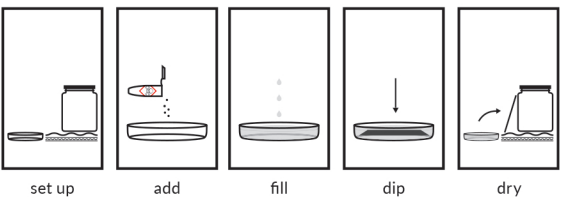
OPTIONAL BUT RECOMMENDED: REAGENTS

HANDLING | STORAGE | DISPOSAL

- Wear clean gloves while handling test kit components
- Never touch white side of Testing Cards, hold by top edges
- Keep away from any heat source: sunlight, open flame, etc.
- Only test in well-ventilated space, avoid fumes
- Never open more than one testing liquid at once
- Do not leave test kit unattended, keep out of reach of children and animals
- Test kit can be stored indefinitely without degradation
- Clean any spills with plenty of running water and soap
- Dispose of unused or used contents, container or material that have been contaminated according to the appropriate local procedures, with respect to environmentally friendly hazardous waste disposal

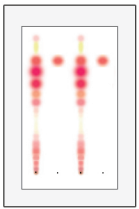
STEP 0  
MARK 4 DOTS

Wearing gloves and using a pencil gently mark 4 dots on white side of Testing Cards. Space the dots at least 1,5 cm from Card bottom and 1 cm from both each other and side edges.



OPTIONAL  
REVEALING WITH DYE

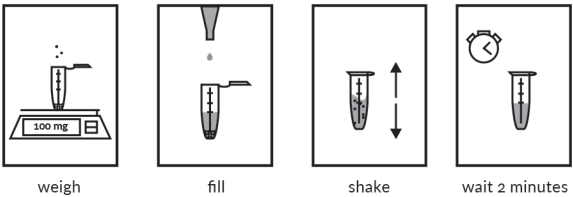
1. Set up a drying and dipping area in a clean sink with paper towels
2. Add 1 Dye vial to Dipping Dish and carefully fill 3/4 with water to mix
3. By its edges press prepared Testing Card into Dipping Dish for 5 seconds
4. Dry the Testing Card for 15 minutes in the prepared drying area



Submerge Testing Card for 5 seconds with the shiny side facing down

TIPS & TRICKS

- Wear gloves and never touch white side of Testing Card
- If Testing Card is too big cut Testing Card to fit in Dipping Dish
- If you cut Testing Card it can not be used to run new samples
- You can not reuse Testing Cards after revealing with Dye
- Dissolved Dye can be reused for 20 minutes



STEP 1  
PREPARING SAMPLE

1. Add cannabis product inside a Plastic Vial
2. Fill the Plastic Vial with Testing Liquid
3. Close the Small Vial firmly and shake briefly
4. Wait 2 minutes for any sediment to fall down

LOW CBD/THC CONTENT (0.2-2.5% THC)

Add 200 mg inside Plastic Vial and 1 ml of Testing Liquid. In Step 2 apply your sample 8 times (8 ul) on 1 dot. At the end of Step 4 divide your result by 8.

MEDIUM CBD/THC CONTENT (2-20% THC)

Add 100 mg inside Plastic Vial and 1 ml of Testing Liquid. In Step 2 apply sample 2 times (2 ul) on 1 dot. At the end of Step 4 read result normally.

HIGH CBD/THC CONTENT (20-100% THC)

Add 40 mg inside Plastic Vial and 1 ml of Testing Liquid. In Step 2 apply your sample once (1 ul) on 1 dot. At the end of Step 4 multiply your result by 5. Recommended only for oils, not flowers or hash.

TIPS & TRICKS

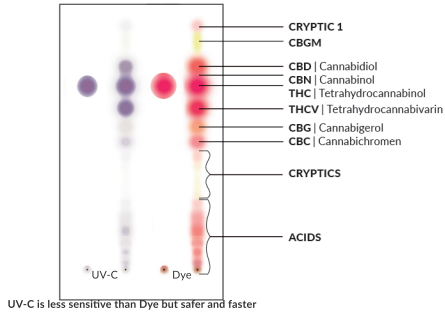
- If testing resin that doesn't easily dissolve, pulverize it
- Extraction instructions for CBD and THC are the same
- Always test in a well ventilated area to avoid breathing in fumes
- Always wear gloves when handling Testing Cards, hold by top edges
- Keep all filled vials and bottles tightly closed to avoid evaporation
- To test fresh plant dry 1 hour in 110C and multiply result by 1,25

STEP 5  
COMPARING RESULTS

1. Compare substance spot length with the scale on the next page
2. Make sure you are measuring the correct spot, THC is below CBD
3. If spot size doesn't fit scale exactly, assume values in between

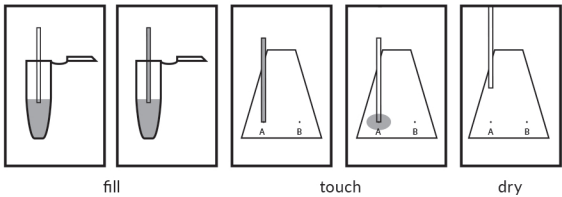
HOW TO INTERPRET DETECTED SPOTS

Test shows composition of cannabis products ("chemotype" or „phenotype"). You can distinguish strains, estimate potency and predict effects. Each spot that shows up indicates a different substance separated from your original sample. If there is only 1 spot your sample is pure. If you only see a big flame-like streak on the bottom of your Testing Card ten the sample has not been fully decarboxylated (heated) in step 3, or it is very old and degraded.



TIPS & TRICKS

- A big dark patch in top part of a Testing Card indicates either contamination or that sample was applied using a different tool than a Glass Tube
- If detected spots are too big double check used mg/ml ratio (page 4)
- If spots are too small, check if Testing Card was heated correctly (page 5)
- The most reliable way to detect synthetic cannabinoids is to check if sample expected to be psychoactive contains only trace amount of THC



STEP 2  
PLACING SAMPLE

1. Place Glass Tube in Plastic Vial with just the tip barely submerged
2. Glass Tube will fill automatically, observe closely under strong light
3. Gently touch down Glass Tube on 1 of 4 dots on Testing Card
4. Allow Glass Tube to empty and pick it up
5. Wait 30 seconds for Testing Card to dry

LOW CBD/THC CONTENT (0.25-2.5% THC)

Repeat 8 times to apply 8 ul on 1 dot

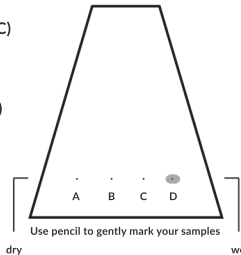
MEDIUM CBD/THC CONTENT (2-20% THC)

Repeat 2 times to apply 2 ul on 1 dot

HIGH CBD/THC CONTENT (20-100% THC)

Apply 1 time (1 ul) on 1 dot

If expecting lower end of % range consider doubling the sample size.



TIPS & TRICKS

- Never touch white side of Testing Cards, hold by top edges
- Do not close Glass Tubes with your finger
- Do not press Glass Tubes (just touch), they break easily
- Practice using Glass Tubes with water, paper towel and strong light
- It might be easiest to use Glass Tubes at a 30-45 degree angle
- Clean Glass Tubes by loading and emptying solvent, discard if clogged

ANALYZING RESULTS

Align spots with the scale on the right and compare with chart below

After confirming which of the detected spots is your expected compound (see reference image on page 8) compare spot's length with the scale on the right and with the chart below. You can estimate amounts in-between, such as 50%.

8 ul of (200 mg / 1 ml)	2.5%	2%	1.5%	1%	0.5%
2 ul of (100 mg / 1 ml)	20%	16%	12%	8%	4%
1 ul of (40 mg / 1 ml)	100%	80%	60%	40%	20%
CBD / THC	9	8	7	6	4

LOW THC CONTENT (0.25-2.5% THC)

If you applied 200 mg / 1 ml sample 8 times (8 ul), divide result by 8.

MEDIUM THC CONTENT (2-20% THC)

If you applied 100 mg / 1 ml sample 2 times (2 ul), divide result by 2.

HIGH THC CONTENT (20-100% THC)

If you applied 40 mg / 1 ml sample 1 times (1 ul), divide result by 5.

To measure trace amounts of CBN, THCV, CBG or CBC in Step 2 apply your sample twice and at the end divide the cannabinoid % result by 2.

RECOMMENDED: DRUGSPRO APP  
AUTOMATIC RESULTS ANALYSIS

DrugsPRO includes all instructions, photos, videos and automatic analysis tool, on top of many other drug checking and harm reduction content and features.



GET DRUGSPRO APP

Available both online and offline for Windows, Mac, Linux, Android and iOS. Visit <https://protestkit.eu/drugspro>.

