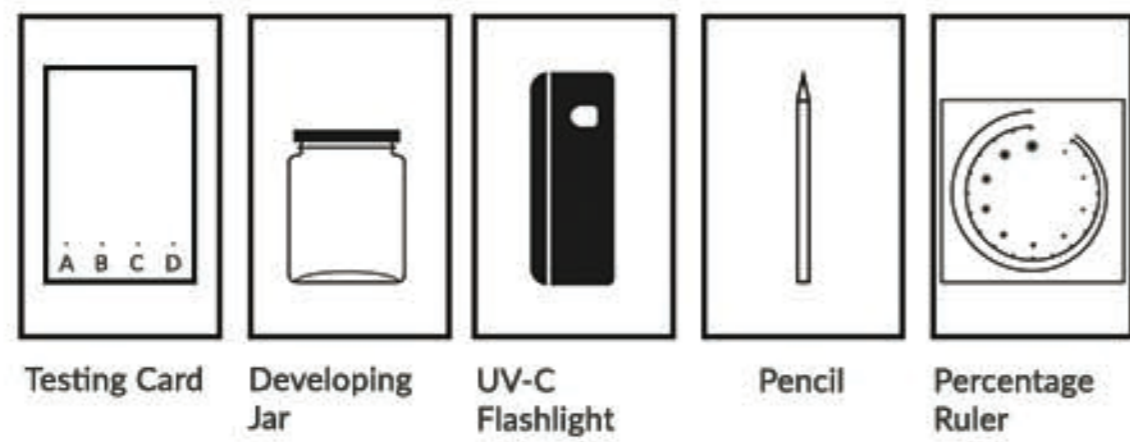
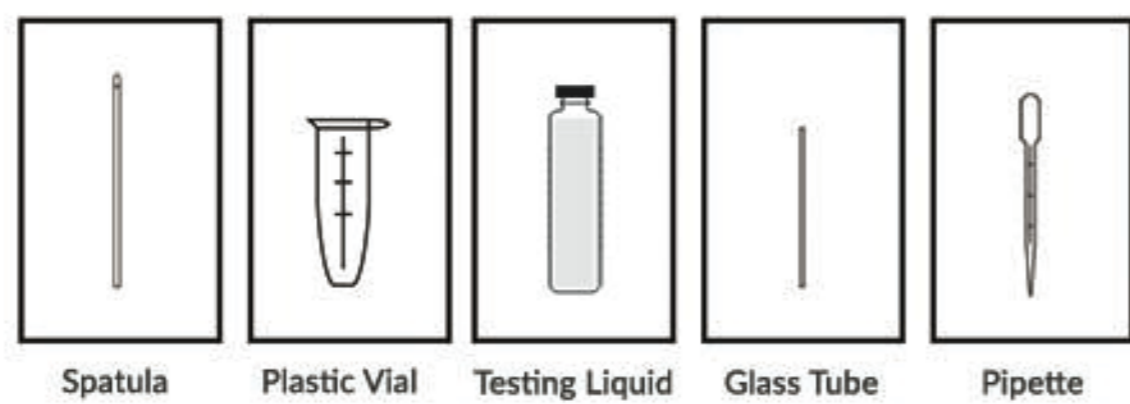




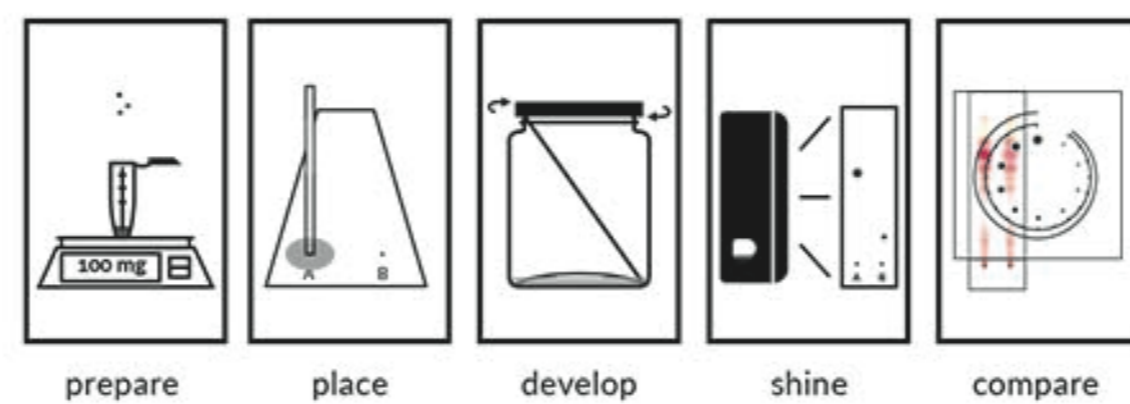
CANNABINOID PRO TEST

Estimate cannabis potency and identify cannabinoids



CONTENTS OF SUBSTANCE PURITY TEST

1. Spatula
2. Plastic Vials
3. Testing Liquid
4. Glass Tubes
5. Pipette
6. Testing Cards
7. Developing Jar
8. UV-C Flashlight
9. Pencil
10. Percentage Ruler



BASIC STEPS GENERAL INSTRUCTIONS

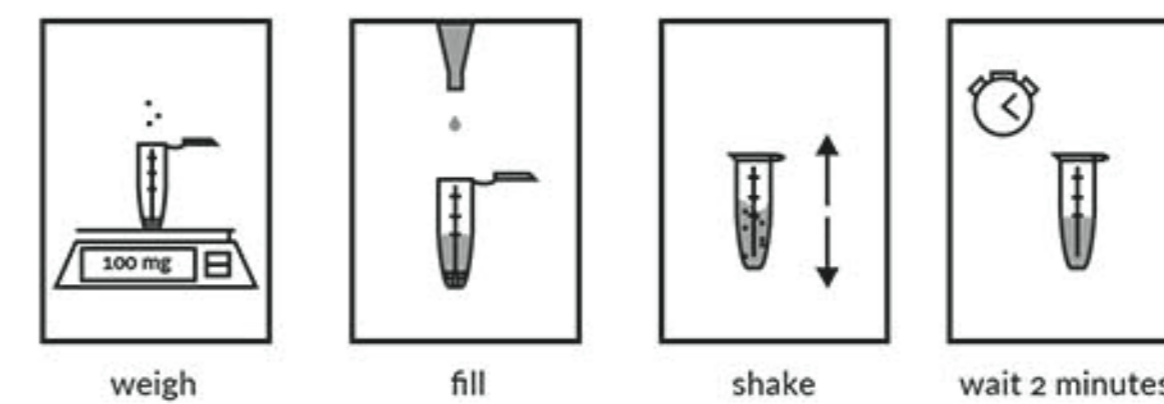
1. PREPARE YOUR SAMPLE: MEASURE AND DISSOLVE
 2. PLACE YOUR SAMPLE ON TESTING CARD
 3. HEAT TESTING CARD AND PLACE IN DEVELOPING JAR
 4. REVEAL RESULTS AND CIRCLE AROUND DETECTED SPOTS
 5. COMPARE RESULTS WITH INSTRUCTIONS AND PERCENTAGE RULERS
- OPTIONAL BUT RECOMMENDED: REAGENTS

HANDLING | STORAGE | DISPOSAL

- Wear clean gloves while handling test kit components
- Never touch white side of Testing Cards, hold by top edges
- Keep away from any heat source: sunlight, open flame, etc.
- Only test in well-ventilated space, avoid fumes
- Never open more than one testing liquid at once
- Do not leave test kit unattended, keep out of reach of children and animals
- Test kit can be stored indefinitely without degradation
- Clean any spills with plenty of running water and soap
- Dispose of unused or used contents, container or material that have been contaminated according to the appropriate local procedures, with respect to environmentally friendly hazardous waste disposal

STEP 0 MARK 4 DOTS

Wearing gloves and using a pencil gently mark 4 dots on white side of Testing Cards. Space the dots at least 2 cm apart from Card bottom and 1 cm from each other and side edges.



STEP 1 PREPARING SAMPLE

1. Add cannabis product inside a Plastic Vial
2. Fill the Plastic Vial with Testing Liquid
3. Close the Small Vial firmly and shake briefly
4. Wait 2 minutes for any sediment to fall down

LOW THC CONTENT (0.2-5% THC)

Measure 200 mg inside Plastic Vial and proceed. In Step 2 apply your sample 8 times (8 ul) one 1 dot. At the end of Step 4 divide your result by 8. It's possible to test leaf of a non-flowering plant as young as 3-4 weeks.

MEDIUM THC CONTENT (5-40% THC)

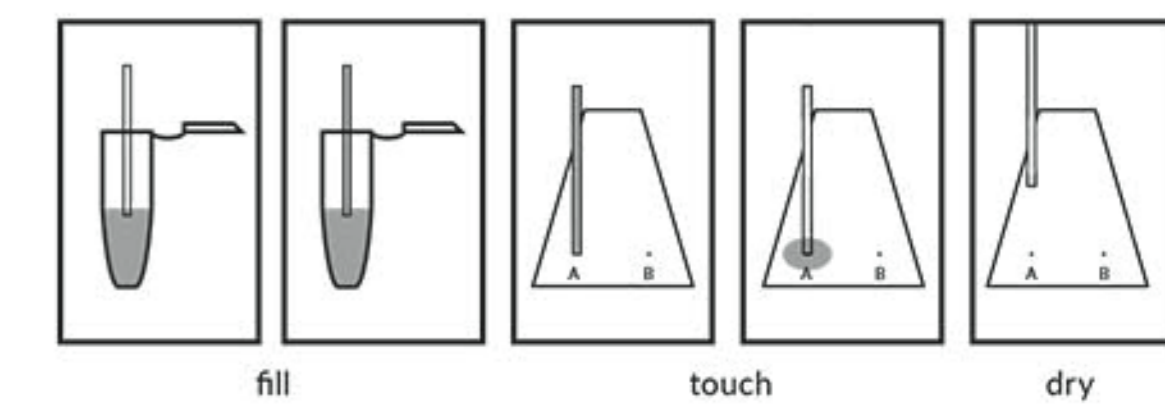
100 mg / 1 ml is recommended for dry flowers or extracts from 5 to 40% THC. To test fresh flowers heat first for 60 minutes in 110C, then use 90 mg / 1 ml.

HIGH THC CONTENT (40-100% THC)

Measure 50 mg inside Plastic Vial and proceed. In Step 2 apply your sample only once (1 ul) one 1 dot. At the end of Step 4 multiply your result by 4.

TIPS & TRICKS

- Instructions for CBD and THC are the same
- Always test in a well ventilated area to avoid breathing in fumes
- Always wear gloves when handling Testing Cards, hold by top edges
- Keep all filled vials and bottles tightly closed to avoid evaporation



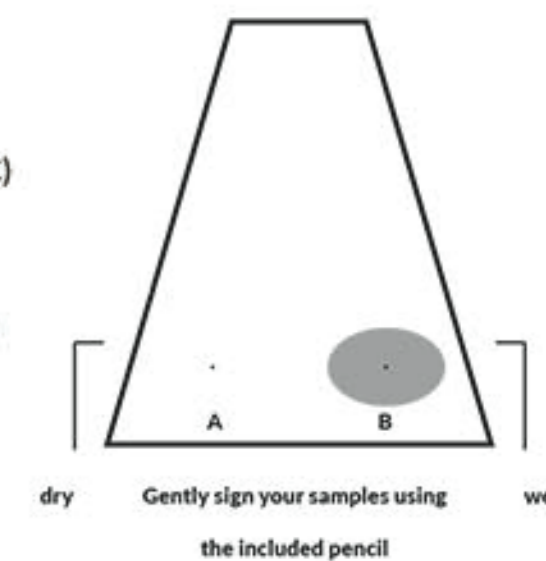
STEP 2 PLACING SAMPLE

1. Place Glass Tube at an angle in Small Vial with just the tip barely submerged
2. Glass Tube will fill automatically, observe under good light conditions
3. Gently touch down Glass Tube on 1 of 4 dots on Testing Card
4. Allow Glass Tube to empty and pick it up
5. Wait 30 seconds for Testing Card to dry

LOW THC CONTENT (0.2-5% THC)
Repeat 8 times to apply 8 ul in 1 dot

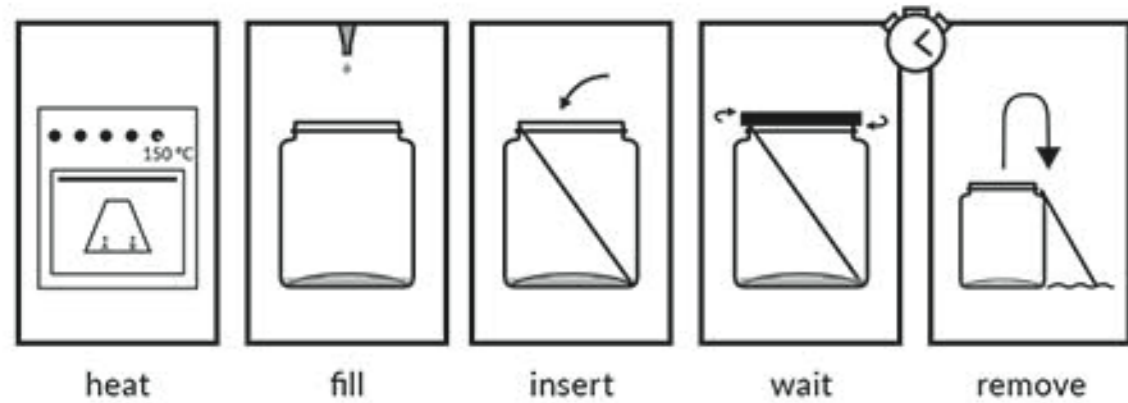
MEDIUM THC CONTENT (5-40% THC)
Repeat 2 times to apply 2 ul in 1 dot

HIGH THC CONTENT (40-100% THC)
Apply 1 time (1 ul) in 1 dot



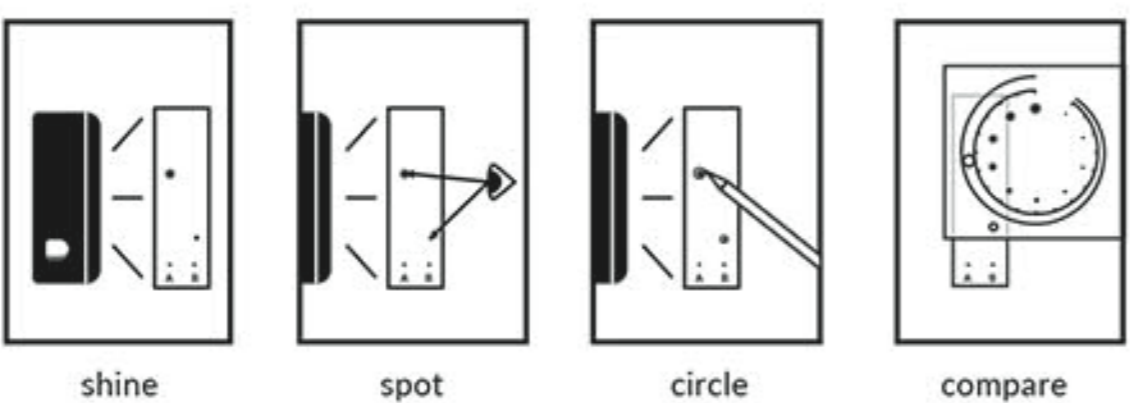
TIPS & TRICKS

- Never touch white side of Testing Cards, hold by top edges
- Do not close Glass Tubes with your finger
- Do not press Glass Tubes (just touch), they break easily
- Practice using Glass Tubes with water, paper towel and good light source
- It might be easiest to submerge Glass Tubes at a 30-45 degree angle
- Clean Glass Tubes by loading and emptying with solvent, discard if clogged



STEP 3 DEVELOPING TESTING CARD

1. Put prepared Testing Card for 5 minutes in an oven at 150C to decarboxylate
2. Fill Developing Jar with 2 ml of fresh Testing Liquid
3. Evenly insert Testing Card with white side facing up and dots at the bottom
4. Close Developing Jar. Wait 25 min. or until Testing Card is almost fully soaked
5. Remove Testing Card, close Developing Jar, air-dry for 3 minutes

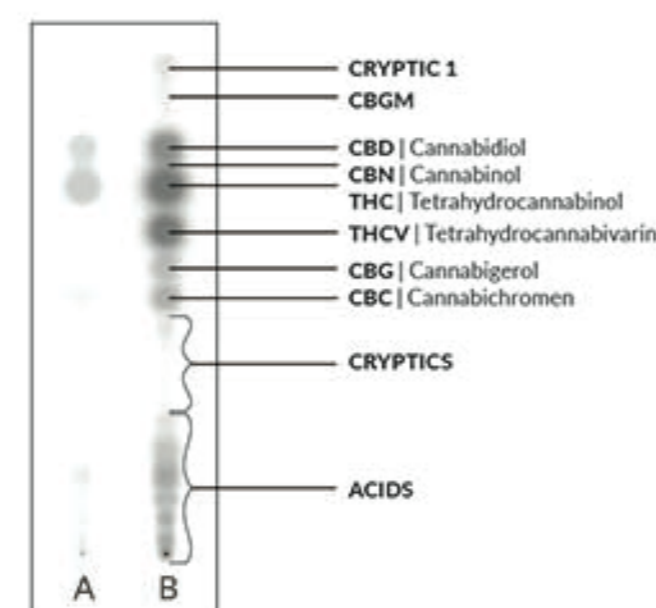


STEP 4 REVEALING WITH LIGHT

1. Use UV-C flashlight to find spots on Testing Card
2. Use pencil to circle 1 mm around detected spot(s)
3. Put Percentage Ruler over detected spot
4. Compare results with Percentage Ruler

WARNING: DO NOT SHINE UV-C LIGHT ON SKIN OR EYES

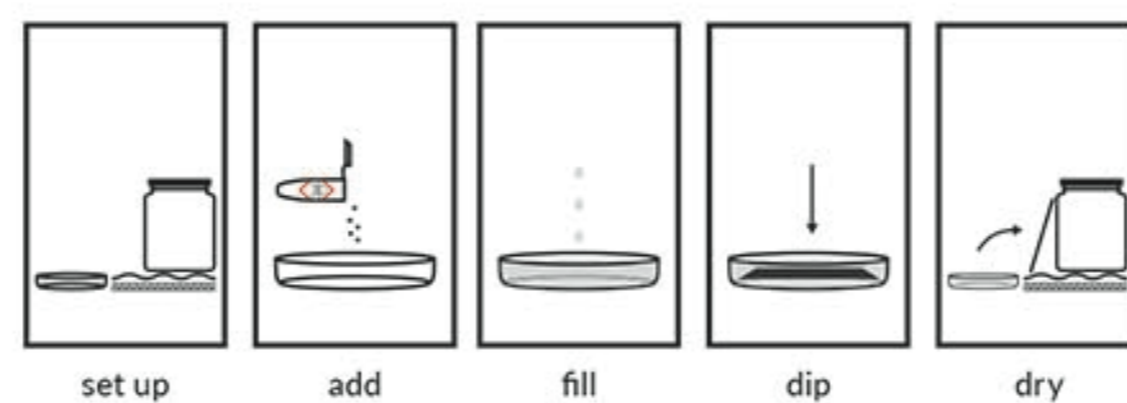
Pay attention to circle around whole spots, not just their darkest part. If a spot is comet-shaped measure its diameter from top to bottom. Spot shape can vary.



Example: sample A contains mostly THC, CBD and traces of CBC

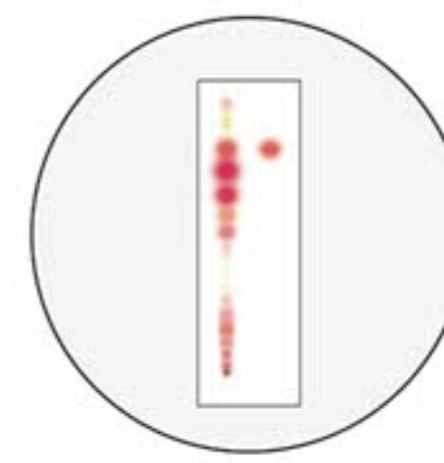
TIPS & TRICKS

- You can reveal THC by exposing used Testing Card to strong normal light for 30 minutes
- You can reuse Testing Cards as long as they have an empty and not dyed „lane“
- Big dark patch on top part of Testing Card indicates sweaty hands contamination



OPTIONAL REVEALING WITH DYE

1. Set up a drying and dipping area in a clean sink with paper towels
2. Add 1 Dye vial to Dipping Dish and carefully fill 3/4 with water to mix
3. By its edges press prepared Testing Card into Dipping Dish for 5 seconds
4. Dry the Testing Card for 15 minutes in the prepared drying area



Submerge Testing Card for 5 seconds with the shiny side facing down

TIPS & TRICKS

- Wear gloves and never touch white side of Testing Card
- If Testing Card is too big cut off corners to fit Dipping Dish
- You can not reuse Testing Cards after revealing with Dye
- Dissolved Dye can be reused for 20 minutes

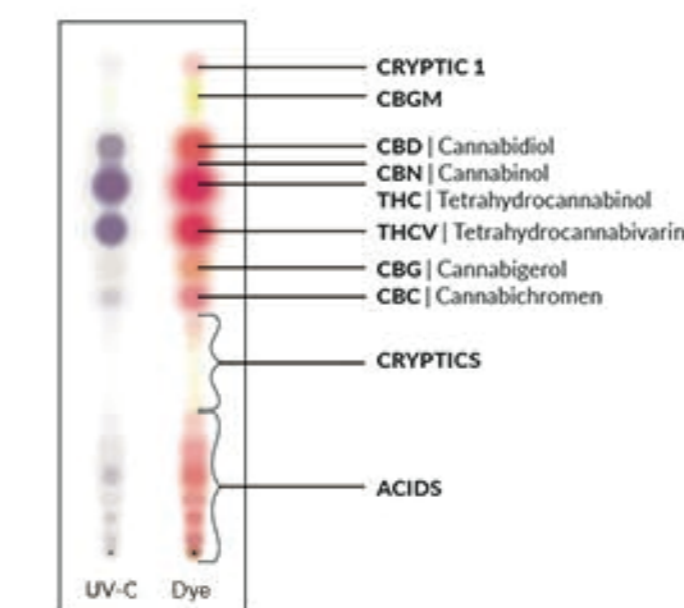
STEP 5 COMPARING RESULTS

1. Put Percentage Ruler over detected spots
2. Align correct cannabinoid spot between two sloped lines
3. Read percentage result where spot fits best between sloped lines

HOW TO INTERPRET DETECTED SPOTS

Test shows full composition of cannabis products ("chemotype" or „phenotype“). You can use it to distinguish strains, estimate potency and predict effects.

Each spot that shows up indicates a different substance separated from your original sample. If there is only one spot your sample is pure. If you only see a big flame-like streak on the bottom of your Testing Card that indicates the sample has not been fully decarboxylated (heated) in step 3 - or it is very old and degraded.



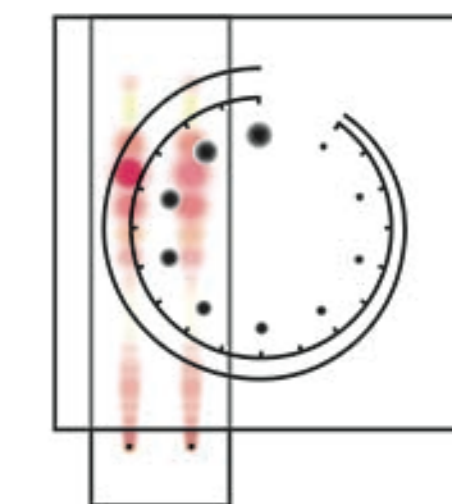
UV-C is less sensitive than Dye but safer

TIPS & TRICKS

- A big dark patch in top part of a Testing Card indicates sweaty hands contamination, or that sample was applied using a different tool than one of included glass tubes.
- If detected spots are too big double check used mg/ml ratio
- If spots are too small, check if Testing Card was heated correctly
- Synthetic cannabinoids if present are usually found in trace amounts, therefore can be detected indirectly if a highly psychoactive sample turns out to contain no THC

HOW TO USE PRO TEST PERCENTAGE RULER

The Percentage Ruler features two ways to measure size of revealed spots. First align the spot that you marked with a pencil between the two sloped lines in an appropriate percentages range. When the spot fits just right check the value listed next to it - this is your purity percentage result. It is possible read results beyond printed numbers, 55% for example. You can also use printed spots as reference, but spot shapes can vary from perfectly round to comet-shaped, this is normal, only length is relevant.



LOW THC CONTENT (0.2-5% THC)

If in Step 1 you prepared 200 mg / 1 ml and in Step 2 you applied sample 8 times (8 ul) then at the end multiply cannabinoid % result by 8

MEDIUM THC CONTENT (5-40% THC)

If in Step 1 you prepared 100 mg / 1 ml and in Step 2 you applied sample 2 times (2 ul), then at the end read cannabinoid % result as is (if the result exceeds Percentage Ruler's 20% scale then apply the Ruler twice to the same spot)

HIGH THC CONTENT (40-100% THC)

If in Step 1 you prepared 50 mg / 1 ml and in Step 2 you applied sample 1 time (1 ul), then at the end multiply cannabinoid % result by 4

TIPS & TRICKS

- To measure trace amounts of CBN, THCV, CBG or CBC in Step 2 apply your sample 4 times (4 ul) and at the end divide the approximate cannabinoid % result by 2